

CBDA All State Scales Set C
High School
PICCOLO

D Major ♩ = 96



B Melodic Minor ♩ = 96



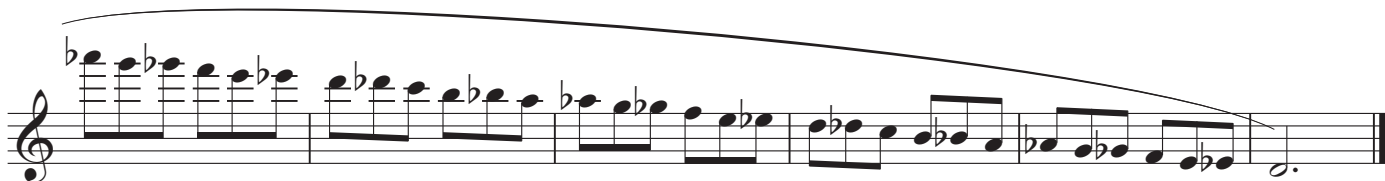
G \flat Major ♩ = 96



E \flat Melodic Minor ♩ = 96



Chromatic ♩ = 96



CBDA All State Scales Set C
High School
FLUTE

D Major ♩ = 96



B Melodic Minor ♩ = 96



G♭ Major ♩ = 96



E♭ Melodic Minor ♩ = 96



Chromatic ♩ = 96



CBDA All State Scales Set C
High School
OBOE

D Major ♩ = 96



B Melodic Minor ♩ = 96



G^b Major ♩ = 96



E^b Melodic Minor ♩ = 96



Chromatic ♩ = 96



CBDA All State Scales Set C

High School

B \flat CLARINET

D Major ♩ = 96

Musical notation for the D Major scale in treble clef, 2/4 time signature. The scale consists of eight measures of eighth notes: D4-E4-F#4-G4, A4-B4-C#5, D5-E5-F#5-G5, A5-B5-C#6, D6-E6-F#6-G6, A6-B6-C#7, D7-E7-F#7-G7, and A7-B7-C#8. The final measure contains a whole note D8.

B Melodic Minor ♩ = 96

Musical notation for the B Melodic Minor scale in treble clef, 2/4 time signature. The scale consists of eight measures of eighth notes: B4-C#4-D#4-E4, F#4-G#4-A#4-B4, C5-D5-E5-F#5, G5-A5-B5-C#6, D6-E6-F#6-G6, A6-B6-C#7, D7-E7-F#7-G7, and A7-B7-C#8. The final measure contains a whole note B8.

G \flat Major ♩ = 96

Musical notation for the G \flat Major scale in treble clef, 2/4 time signature. The scale consists of eight measures of eighth notes: G \flat 4-A \flat 4-B \flat 4-C \flat 4, D \flat 4-E \flat 4-F \flat 4-G \flat 4, A \flat 4-B \flat 4-C \flat 4, D \flat 4-E \flat 4-F \flat 4, G \flat 4-A \flat 4-B \flat 4, C \flat 4-D \flat 4-E \flat 4, F \flat 4-G \flat 4, and A \flat 4-B \flat 4. The final measure contains a whole note G \flat 4.

Continuation of the G \flat Major scale in treble clef, 2/4 time signature. The scale consists of eight measures of eighth notes: C \flat 4-D \flat 4-E \flat 4-F \flat 4, G \flat 4-A \flat 4-B \flat 4, C \flat 4-D \flat 4-E \flat 4, F \flat 4-G \flat 4, A \flat 4-B \flat 4, C \flat 4-D \flat 4, E \flat 4-F \flat 4, and G \flat 4-A \flat 4. The final measure contains a whole note G \flat 4.

E \flat Melodic Minor ♩ = 96

Musical notation for the E \flat Melodic Minor scale in treble clef, 2/4 time signature. The scale consists of eight measures of eighth notes: E \flat 4-F \flat 4-G \flat 4-A \flat 4, B \flat 4-C \flat 4-D \flat 4-E \flat 4, F \flat 4-G \flat 4-A \flat 4, B \flat 4-C \flat 4, D \flat 4-E \flat 4, F \flat 4-G \flat 4, A \flat 4-B \flat 4, and C \flat 4-D \flat 4. The final measure contains a whole note E \flat 4.

Chromatic ♩ = 96

Musical notation for the Chromatic scale in treble clef, 6/8 time signature. The scale consists of eight measures of eighth notes: C4-D4-E4-F4, G4-A4-B4-C5, D5-E5-F5-G5, A5-B5-C6, D6-E6-F6-G6, A6-B6-C7, D7-E7-F7, and G7-A7. The final measure contains a whole note C8.

Continuation of the Chromatic scale in treble clef, 6/8 time signature. The scale consists of eight measures of eighth notes: B7-C8, D8-E8-F8, G8-A8-B8, C9-D9-E9, F9-G9-A9, B9-C10, D10-E10, and F10-G10. The final measure contains a whole note C11.

Continuation of the Chromatic scale in treble clef, 6/8 time signature. The scale consists of eight measures of eighth notes: E10-F10, G10-A10, B10-C11, D11-E11, F11-G11, A11-B11, C12-D12, and E12-F12. The final measure contains a whole note C13.

CBDA All State Scales Set C
High School
B \flat BASS CLARINETS

D Major ♩ = 96



B Melodic Minor ♩ = 96



G \flat Major ♩ = 96



E \flat Melodic Minor ♩ = 96



Chromatic ♩ = 96



CBDA All State Scales Set C
High School
B \flat CONTRABASS CLARINET
E \flat CONTRALTO CLARINET

D Major ♩ = 96



B Melodic Minor ♩ = 96



G \flat Major ♩ = 96



E \flat Melodic Minor ♩ = 96



Chromatic ♩ = 96



CBDA All State Scales Set C
High School
BASSOON

D Major ♩ = 96

Musical notation for the D Major scale in bass clef, 2/4 time signature. The scale consists of eight measures: D4, E4, F#4, G4, A4, B4, C#5, D5. The notation includes slurs and ties to indicate the continuous flow of the scale.

B Melodic Minor ♩ = 96

Musical notation for the B Melodic Minor scale in bass clef, 2/4 time signature. The scale consists of eight measures: B3, C4, D4, E4, F#4, G#4, A4, B4. The notation includes slurs and ties to indicate the continuous flow of the scale.

G^b Major ♩ = 96

Musical notation for the G^b Major scale in bass clef, 2/4 time signature. The scale consists of eight measures: G^b3, A^b3, B^b3, C4, D4, E4, F4, G4. The notation includes slurs and ties to indicate the continuous flow of the scale.

E^b Melodic Minor ♩ = 96

Musical notation for the E^b Melodic Minor scale in bass clef, 2/4 time signature. The scale consists of eight measures: E^b3, F^b3, G^b3, A^b3, B^b3, C4, D4, E4. The notation includes slurs and ties to indicate the continuous flow of the scale.

Chromatic ♩ = 96

Musical notation for the Chromatic scale in bass clef, 6/8 time signature. The scale consists of eight measures: D^b4, D4, D#4, E4, E#4, F4, F#4, F#4. The notation includes a slur and ties to indicate the continuous flow of the scale.

Musical notation for the Chromatic scale in bass clef, 6/8 time signature. The scale consists of eight measures: E4, E4, E^b4, E^b4, E^b4, D4, D4, D^b4. The notation includes a slur and ties to indicate the continuous flow of the scale.

Musical notation for the Chromatic scale in bass clef, 6/8 time signature. The scale consists of eight measures: D^b4, D^b4, D4, D4, D4, D4, D4, D4. The notation includes a slur and ties to indicate the continuous flow of the scale.

CBDA All State Scales Set C
High School
SAXOPHONES

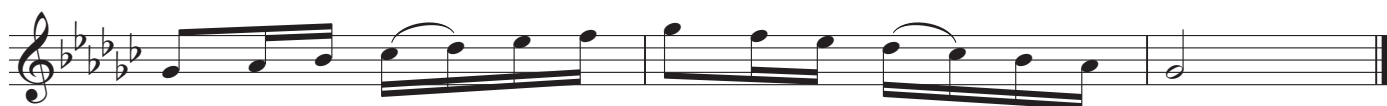
D Major ♩ = 96



B Melodic Minor ♩ = 96



G♭ Major ♩ = 96



E♭ Melodic Minor ♩ = 96



Chromatic ♩ = 96



CBDA All State Scales Set C
High School
FRENCH HORN

D Major ♩ = 96



B Melodic Minor ♩ = 96



G♭ Major ♩ = 96



E♭ Melodic Minor ♩ = 96



Chromatic ♩ = 96



CBDA All State Scales Set C
High School
TRUMPET

D Major ♩ = 96

Musical notation for the D Major scale in 2/4 time. The scale is written on a single staff in treble clef with a key signature of two sharps (F# and C#). The tempo is marked as ♩ = 96. The notation shows the ascending and descending scales with appropriate slurs and ties.

B Melodic Minor ♩ = 96

Musical notation for the B Melodic Minor scale in 2/4 time. The scale is written on a single staff in treble clef with a key signature of two sharps (F# and C#). The tempo is marked as ♩ = 96. The notation shows the ascending and descending scales with appropriate slurs and ties.

G^b Major ♩ = 96

Musical notation for the G^b Major scale in 2/4 time. The scale is written on a single staff in treble clef with a key signature of three flats (B^b, E^b, and A^b). The tempo is marked as ♩ = 96. The notation shows the ascending and descending scales with appropriate slurs and ties.

E^b Melodic Minor ♩ = 96

Musical notation for the E^b Melodic Minor scale in 2/4 time. The scale is written on a single staff in treble clef with a key signature of three flats (B^b, E^b, and A^b). The tempo is marked as ♩ = 96. The notation shows the ascending and descending scales with appropriate slurs and ties.

Chromatic ♩ = 96

Musical notation for the Chromatic scale in 6/8 time. The scale is written on a single staff in treble clef with a key signature of one sharp (F#). The tempo is marked as ♩ = 96. The notation shows the ascending and descending scales with appropriate slurs and ties.

Musical notation for the Chromatic scale in 6/8 time. The scale is written on a single staff in treble clef with a key signature of one flat (B^b). The tempo is marked as ♩ = 96. The notation shows the ascending and descending scales with appropriate slurs and ties.

CBDA All State Scales Set C
High School
TROMBONE

D Major ♩ = 96



B Melodic Minor ♩ = 96



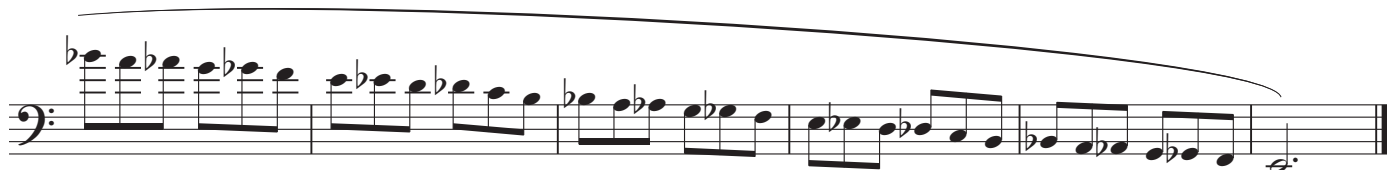
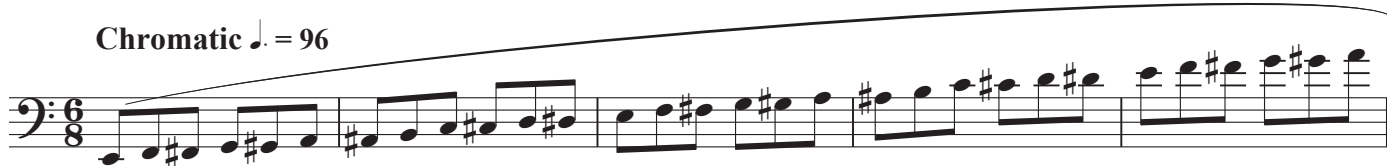
G \flat Major ♩ = 96



E \flat Melodic Minor ♩ = 96



Chromatic ♩ = 96



CBDA All State Scales Set C for 2012

High School

BASS TROMBONE

D Major ♩ = 96

Musical notation for the D Major scale in bass clef, 2/4 time signature. The scale starts on D4 and ends on D4. The notes are: D, E, F#, G, A, B, C#, D.

B Melodic Minor ♩ = 96

Musical notation for the B Melodic Minor scale in bass clef, 2/4 time signature. The scale starts on B3 and ends on B3. The notes are: B, C, D, E, F#, G#, A, B. The final measure shows the key signature change to three flats.

G^b Major ♩ = 96

Musical notation for the G^b Major scale in bass clef, 2/4 time signature. The scale starts on G^b3 and ends on G^b3. The notes are: G^b, A^b, B^b, C^b, D^b, E^b, F^b, G^b.

E^b Melodic Minor ♩ = 96

Musical notation for the E^b Melodic Minor scale in bass clef, 2/4 time signature. The scale starts on E^b3 and ends on E^b3. The notes are: E^b, F^b, G^b, A^b, B^b, C^b, D^b, E^b. The final measure shows the key signature change to three flats.

Chromatic ♩ = 96

Musical notation for the Chromatic scale in bass clef, 6/8 time signature. The scale starts on B^b3 and ends on B^b3. The notes are: B^b, B, C^b, C, D^b, D, E^b, E, F^b, F, G^b, G, A^b, A, B^b.

Musical notation for the Chromatic scale in bass clef, 6/8 time signature. The scale starts on B3 and ends on B3. The notes are: B, B^b, A, A^b, G, G^b, F, F^b, E, E^b, D, D^b, C, C^b, B^b.

CBDA All State Scales Set C
High School
EUPHONIUM

D Major ♩ = 96

Musical notation for the D Major scale in bass clef, 2/4 time signature. The scale consists of eight eighth notes: D, E, F#, G, A, B, C#, and D. The notes are grouped in pairs with slurs.

B Melodic Minor ♩ = 96

Musical notation for the B Melodic Minor scale in bass clef, 2/4 time signature. The scale consists of eight eighth notes: B, C, D, E, F#, G#, A, and B. The notes are grouped in pairs with slurs. The notes F# and G# are marked with a sharp sign.

G^b Major ♩ = 96

Musical notation for the G^b Major scale in bass clef, 2/4 time signature. The scale consists of eight eighth notes: G^b, A^b, B^b, C, D, E, F, and G^b. The notes are grouped in pairs with slurs.

E^b Melodic Minor ♩ = 96

Musical notation for the E^b Melodic Minor scale in bass clef, 2/4 time signature. The scale consists of eight eighth notes: E^b, F, G, A, B, C, D, and E^b. The notes are grouped in pairs with slurs. The notes B and C are marked with a flat sign.

Chromatic ♩ = 96

Musical notation for the Chromatic scale in bass clef, 6/8 time signature. The scale consists of 12 eighth notes: C, C#, D, D#, E, E#, F, F#, G, G#, A, and A#. The notes are grouped in pairs with slurs.

Musical notation for the Chromatic scale in bass clef, 6/8 time signature. The scale consists of 12 eighth notes: B, B^b, A, A^b, G, G^b, F, F^b, E, E^b, D, and D^b. The notes are grouped in pairs with slurs.

CBDA All State Scales Set C
High School
TUBA

D Major ♩ = 96



B Melodic Minor ♩ = 96



G^b Major ♩ = 96



E^b Melodic Minor ♩ = 96



Chromatic ♩ = 96



CBDA All State Scales Set C
High School
MALLETS

D Major ♩ = 96



B Melodic Minor ♩ = 96



G \flat Major ♩ = 96



E \flat Melodic Minor ♩ = 96



Chromatic ♩ = 96

